

BANDED RECLOSER MOUNTING BRACKETS

FOR CLUSTER MOUNTING RECLOSER BANKS

FEATURES

- Aluminum lightweight construction
- Available for mounting 1, 2, or 3 reclosers
- Banded units for where through-bolt holes are not possible

PRODUCT SPECIFICATIONS

- Fits pole diameters from 7 3/4" to 12 1/4"
- Compact circular arrangement of banded style offers 9" extension from pole face

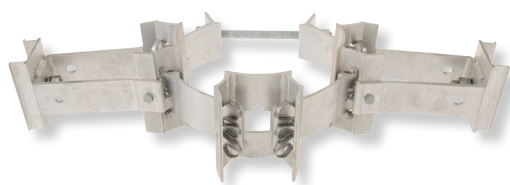
MATERIALS

- Bracket - Aluminum 6061-T6
- Fasteners - Galvanized steel

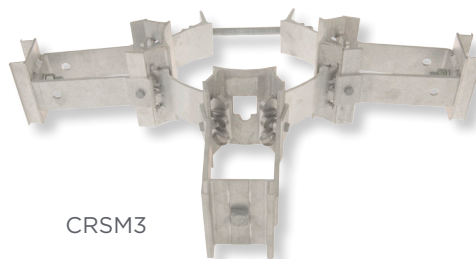
Hubbell has a policy of continuous product improvement. Please visit hubbelpowersystems.com to confirm current design specifications



CRSM1



CRSM2



CRSM3

CATALOG NO.	POSITIONS	MOUNTING TYPE	SHIP WEIGHT (EACH)
CRSM1	1	Banded	10 lbs. (4.5 kg)
CRSM2	2	Banded	12 lbs. (5.4 kg)
CRSM3	3	Banded	15 lbs (6.8 kg)

SF_06_060_E